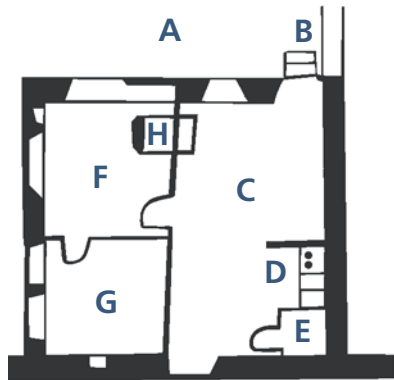


Studio layout



- A** Small garden
- B** Entrance
- C** Kitchenette
- D** Shower/WC
- E** Wood-burning oven
- F** Living room
- G** Bedroom
- H** Work area

Photos of a studio



Arrival

Please arrive Monday - Friday before 5pm, and send an email to karin.melcher@kartause.ch (or call +41 (0)52 748 41 36) at least two days in advance to confirm the exact time of your arrival.

Departure

Please pay the cleaning fee and telephone bill at reception before you leave.

Facilities and furnishings

The studios have all amenities necessary for simple living; including a kitchenette, shower/WC, wood-burning stove, electric storage heating, cookingutensils, dishes, cutlery, bed sheets, and towels.

Maintenance and cleaning

The guest is responsible for maintaining and cleaning the studio during their stay. It must be left in a clean, tidy, and swept state. An additional fee of CHF 200.00 will be charged for the final cleaning service, heating wood, and bedding.

Mail

You can pick up your mail at reception.

Telephone/Internet

There is a landline telephone available for a basic fee of CHF10.00. This, and all telephone expenses incurred must be paid at reception before departure. Although we do have Wifi on the premises, there is unfortunately no reception in the studio.